

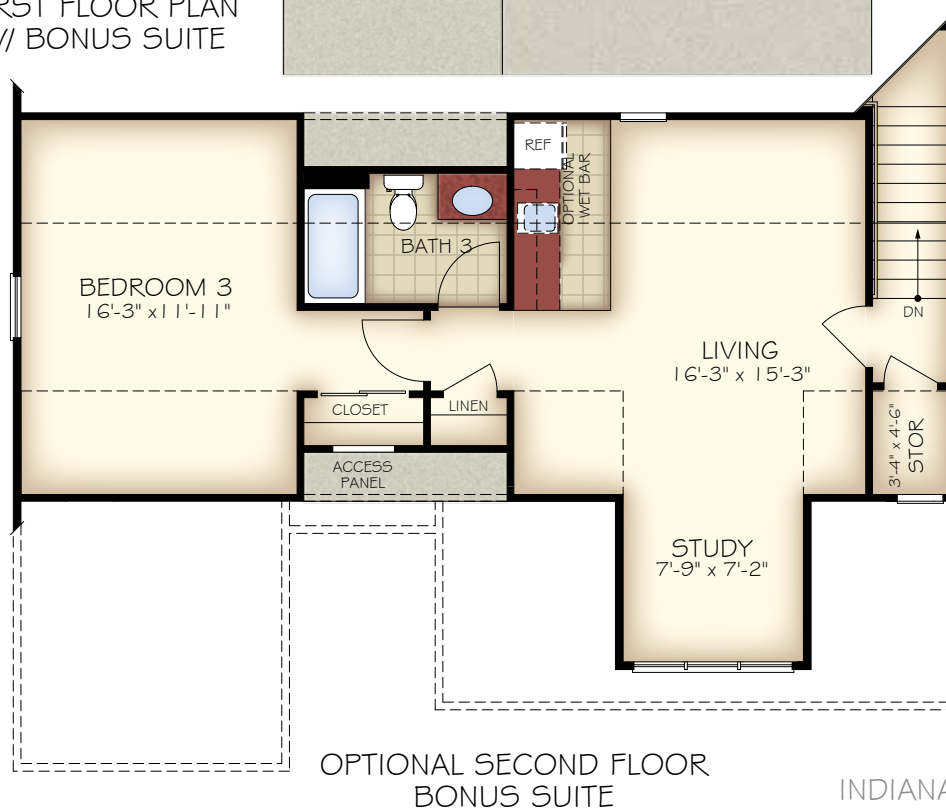


INDIANAPOLIS - PORTICO

AMERICAN PORCH

REV. 09.21

\*Optional courtyard features shown: Artificial turf, Landscaping, Trellis/Pergola, Plant walls (2), Water feature, and Stepping stone paths

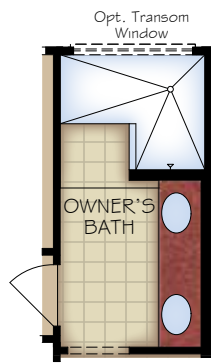


INDIANAPOLIS - PORTICO

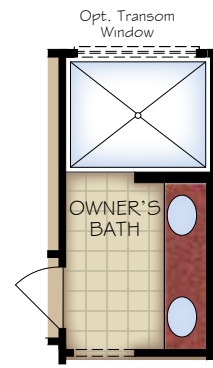
AMERICAN PORCH

REV. 09.21

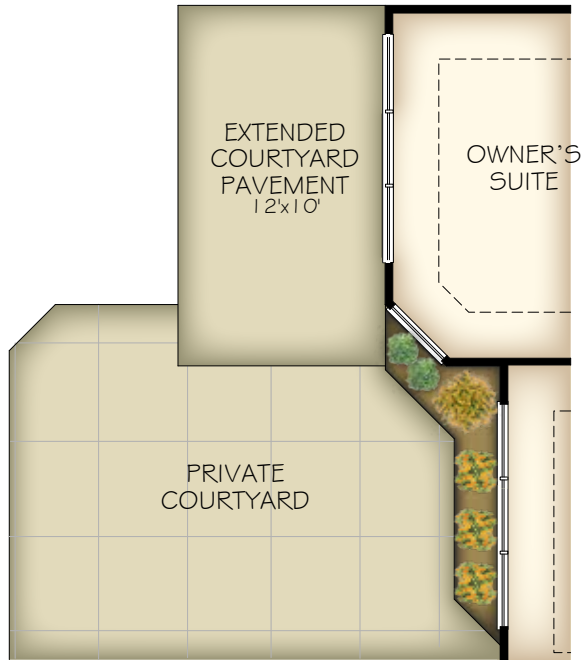
\*Note: Tray Ceilings on the First Floor with Bonus Suite option are in the following areas:  
Dining Room, Master Bedroom.



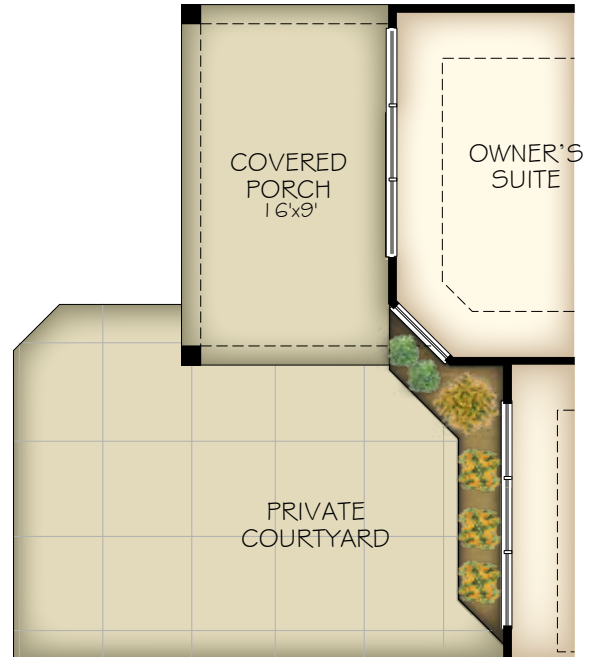
OPTIONAL L-SHAPED SHOWER LAYOUT  
WITH ZERO THRESHOLD



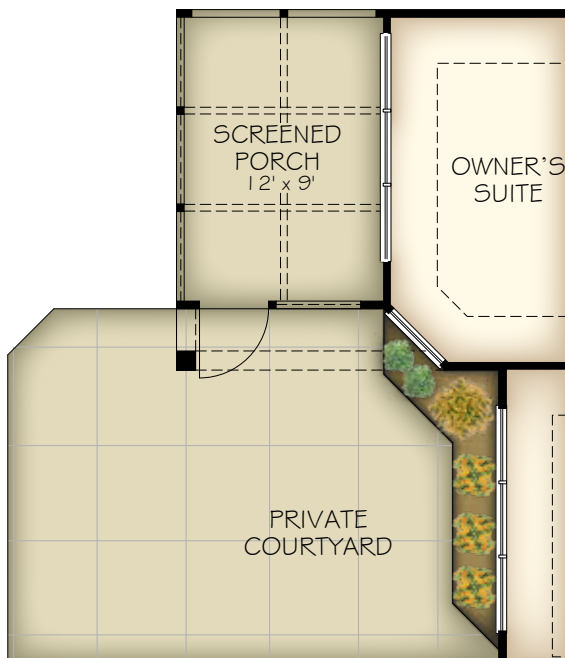
OPTIONAL UNIVERSAL  
SHOWER LAYOUT  
WITH ZERO THRESHOLD



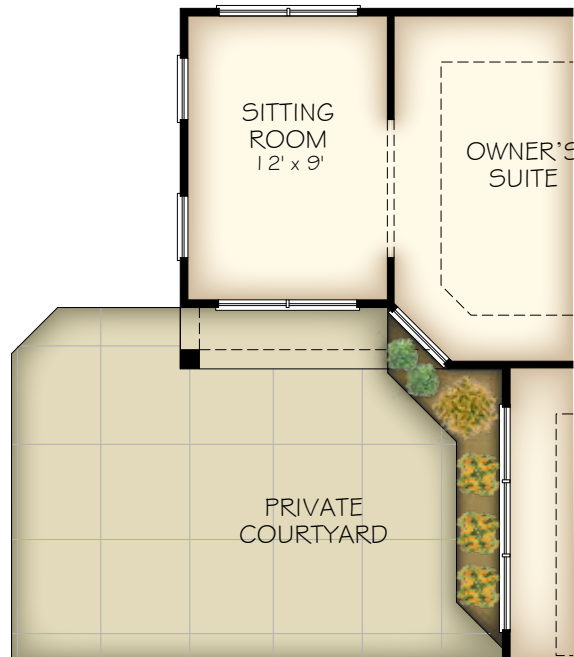
OPTIONAL EXTENDED  
COURTYARD PAVEMENT



OPTIONAL COVERED PORCH



OPTIONAL SCREENED PORCH



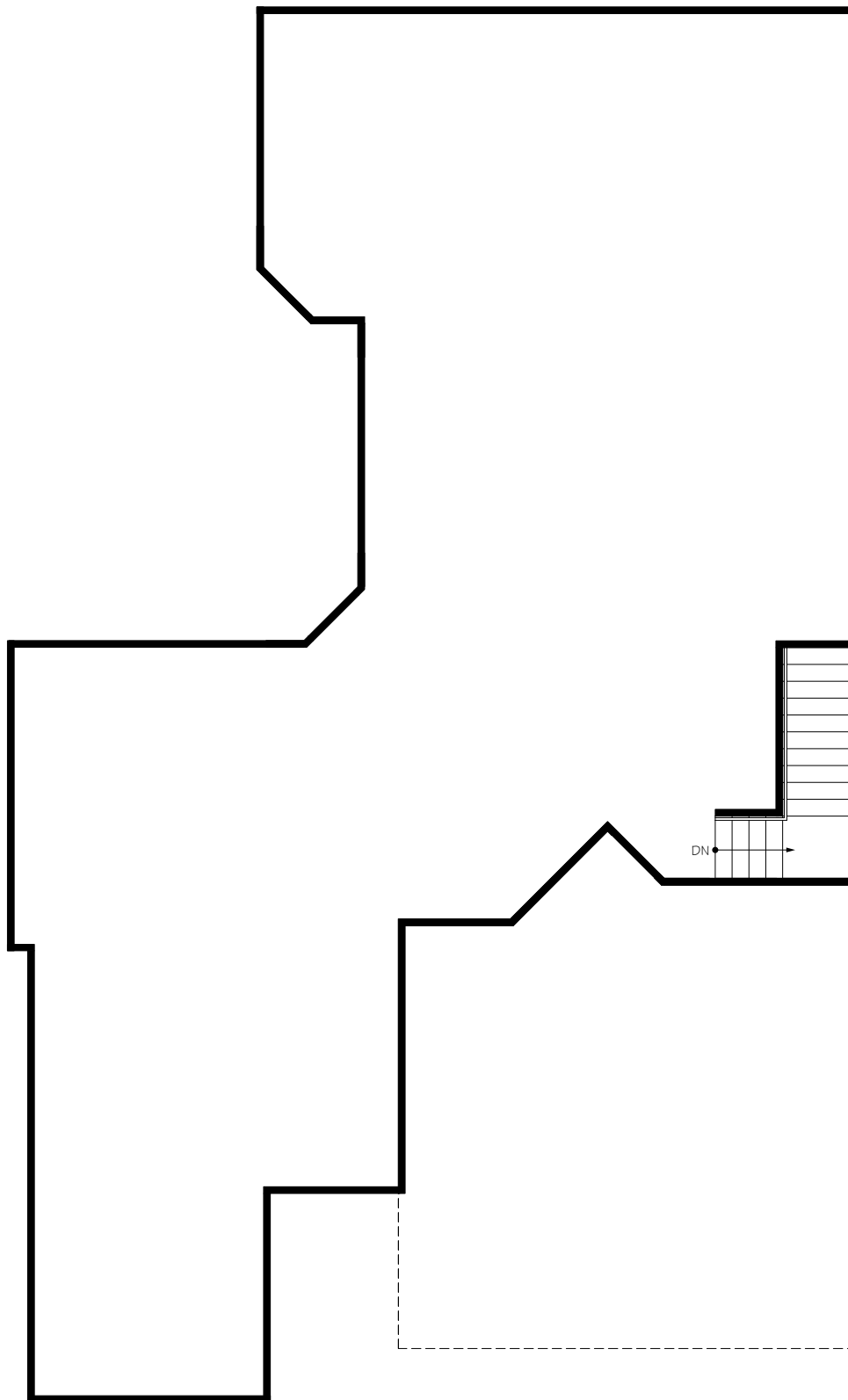
OPTIONAL SITTING ROOM

INDIANAPOLIS - PORTICO

AMERICAN PORCH

REV. 09.21

\*Note: Zero threshold is not available with a basement home. There will be a threshold included.



CONSULT WITH YOUR LOCAL NEW HOMES  
SALES SPECIALIST TO DETERMINE IF  
BASEMENTS ARE AVAILABLE, AND THE  
CONFIGURATIONS THAT ARE OFFERED