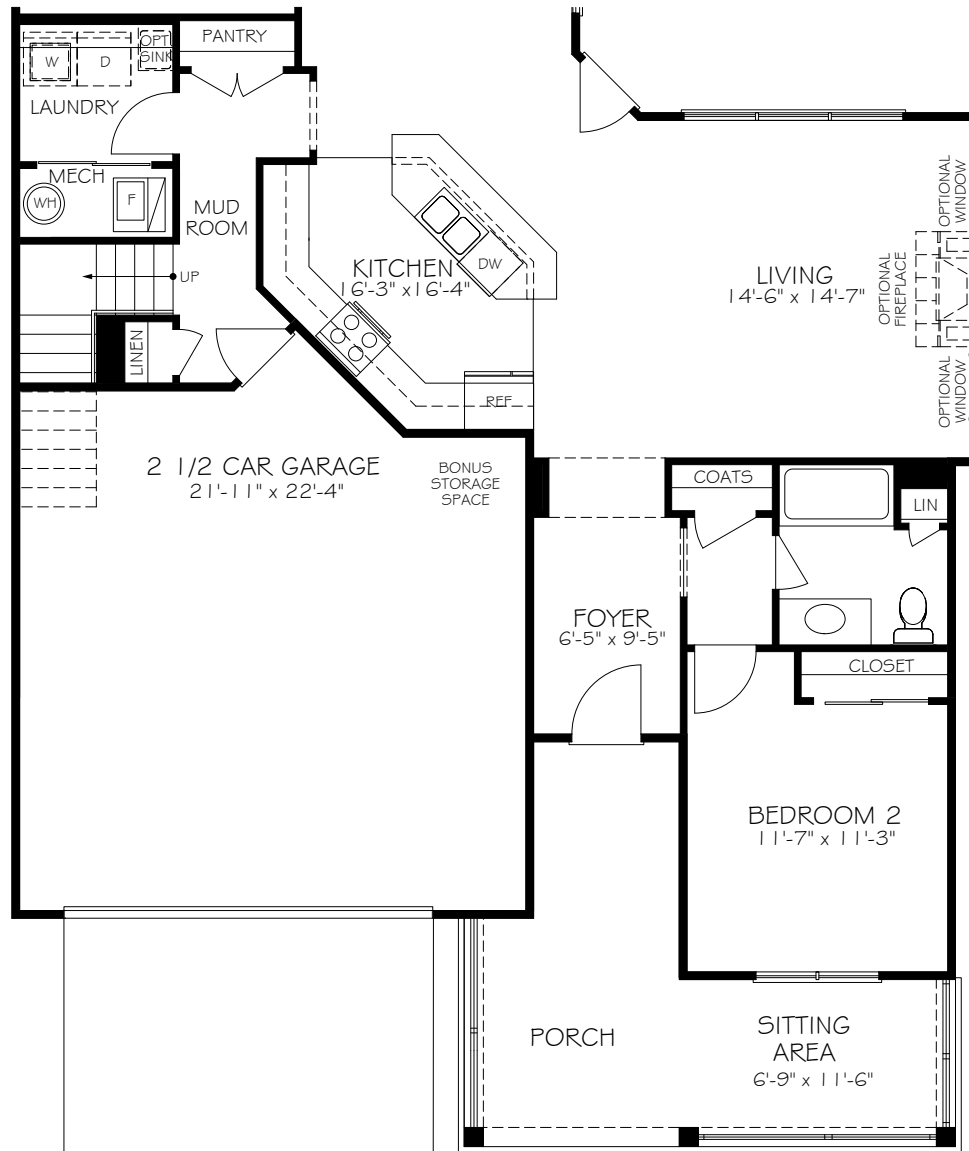


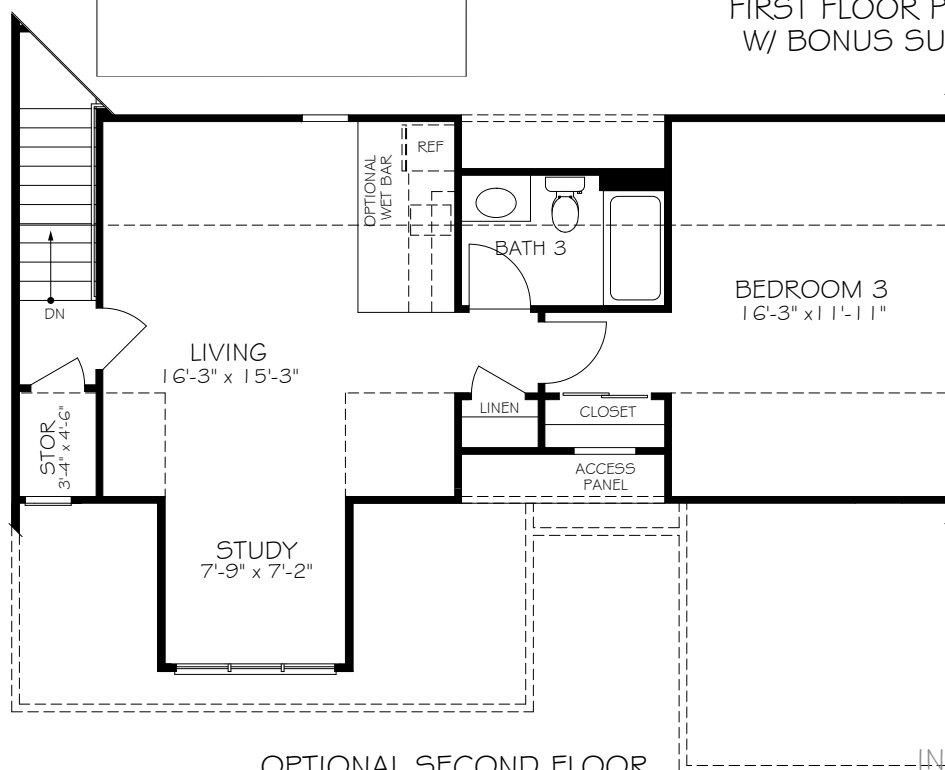
INDIANAPOLIS - PORTICO
AMERICAN PORCH
REV. 09.21

*Optional courtyard features shown: Artificial turf, Landscaping, Trellis/Pergola, Plant walls (2), Water feature, and Stepping stone paths

© IP86, LLC 2022



FIRST FLOOR PLAN
W/ BONUS SUITE

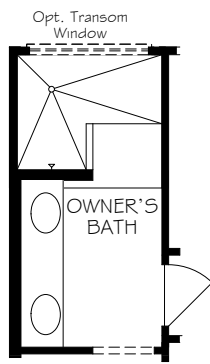


OPTIONAL SECOND FLOOR
BONUS SUITE

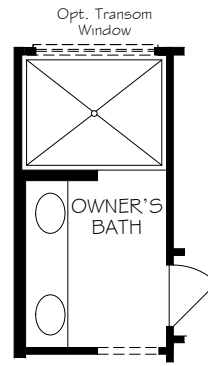
INDIANAPOLIS - PORTICO
AMERICAN PORCH

REV. 09.21

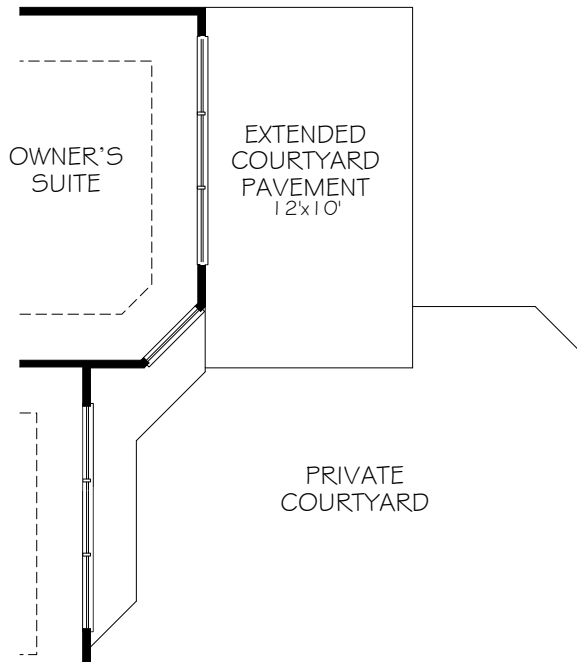
*Note: Tray Ceilings on the First Floor with Bonus Suite option are in the following areas:
Dining Room, Master Bedroom.



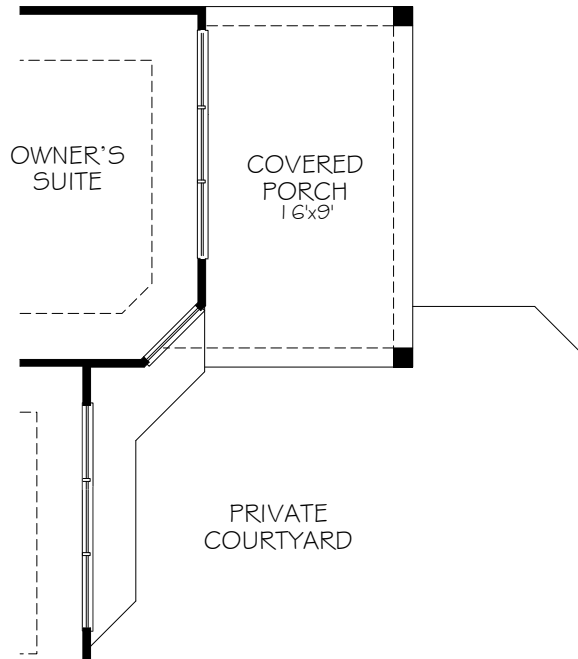
OPTIONAL L-SHAPED SHOWER LAYOUT
WITH ZERO THRESHOLD



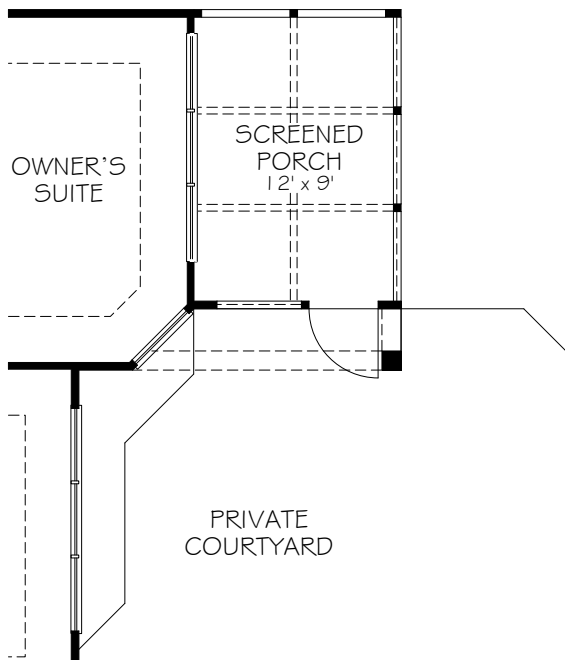
OPTIONAL UNIVERSAL
SHOWER LAYOUT
WITH ZERO THRESHOLD



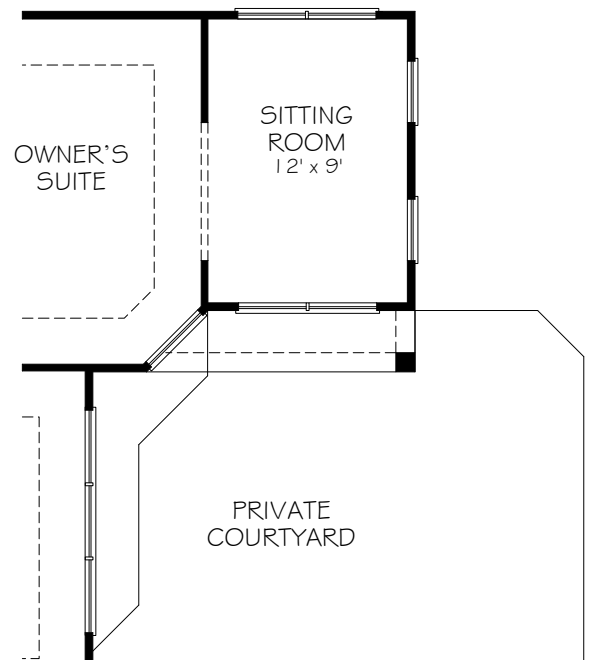
OPTIONAL EXTENDED
COURTYARD PAVEMENT



OPTIONAL COVERED PORCH



OPTIONAL SCREENED PORCH



OPTIONAL SITTING ROOM

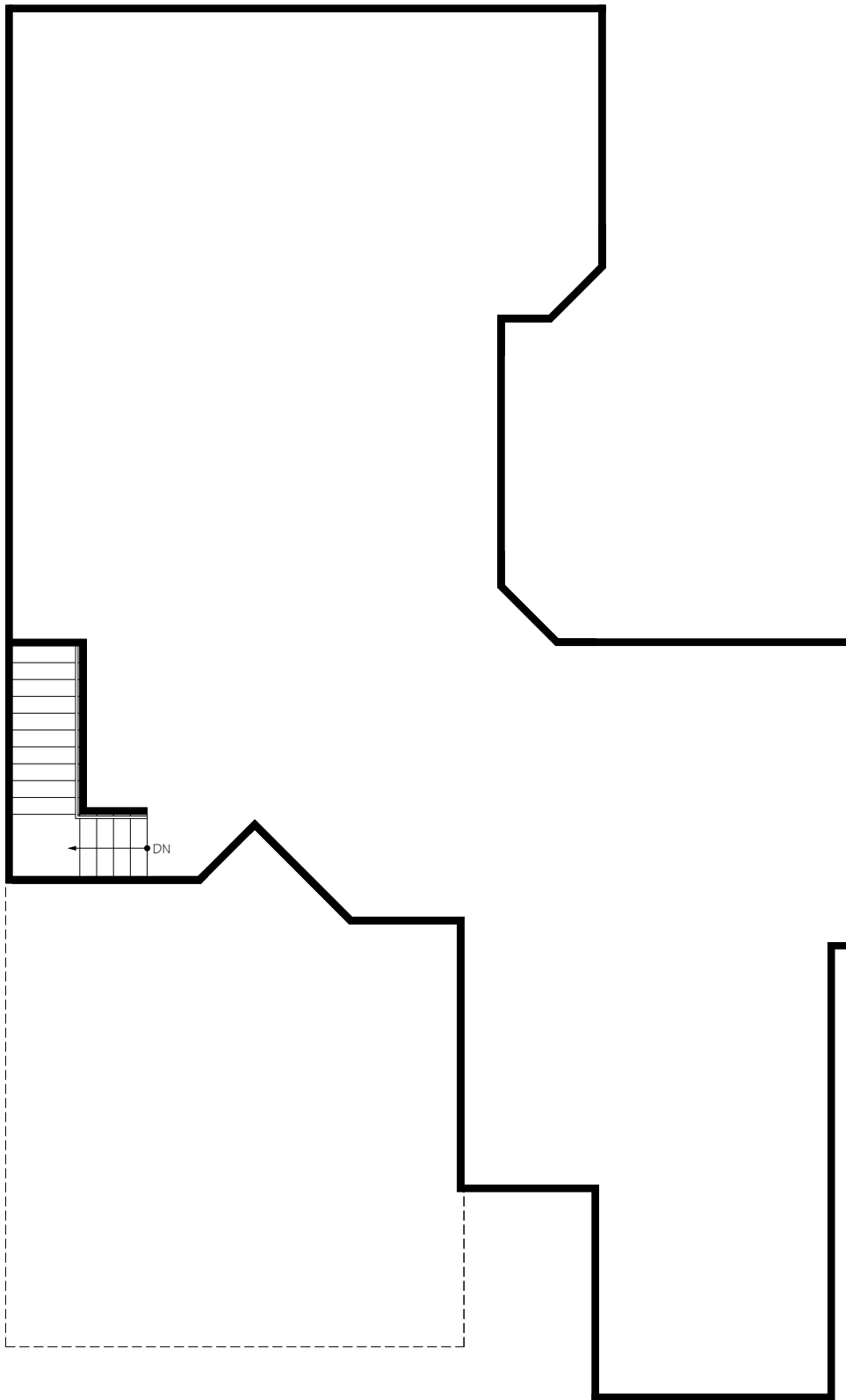
INDIANAPOLIS - PORTICO

AMERICAN PORCH

*Note: Zero threshold is not available with a basement home. There will be a threshold included.

REV. 09.21

© IP86, LLC 2022



CONSULT WITH YOUR LOCAL NEW HOMES
SALES SPECIALIST TO DETERMINE IF
BASEMENTS ARE AVAILABLE, AND THE
CONFIGURATIONS THAT ARE OFFERED