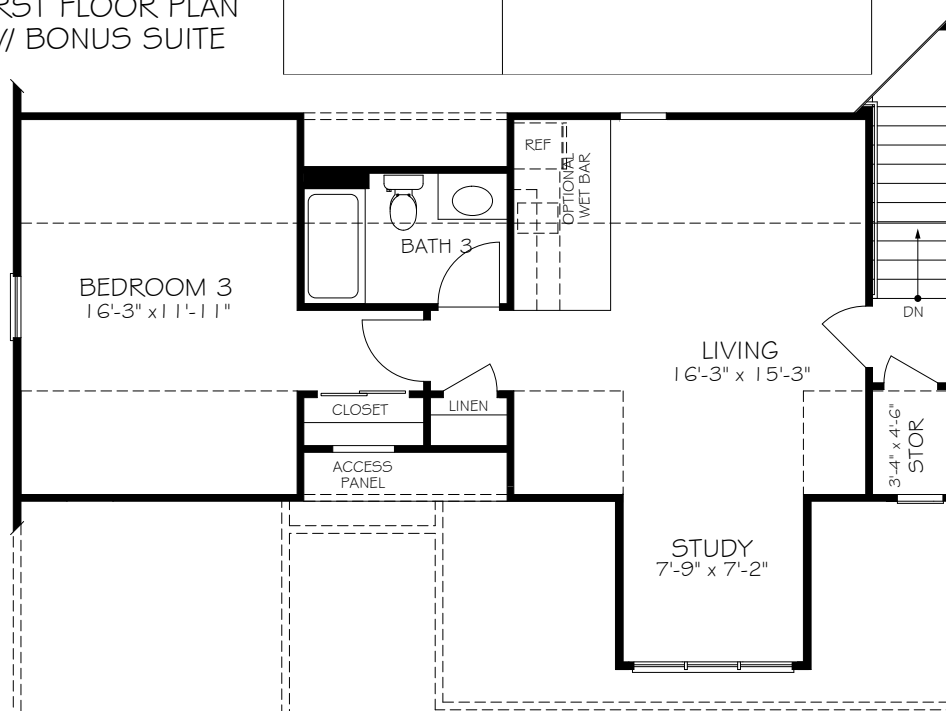
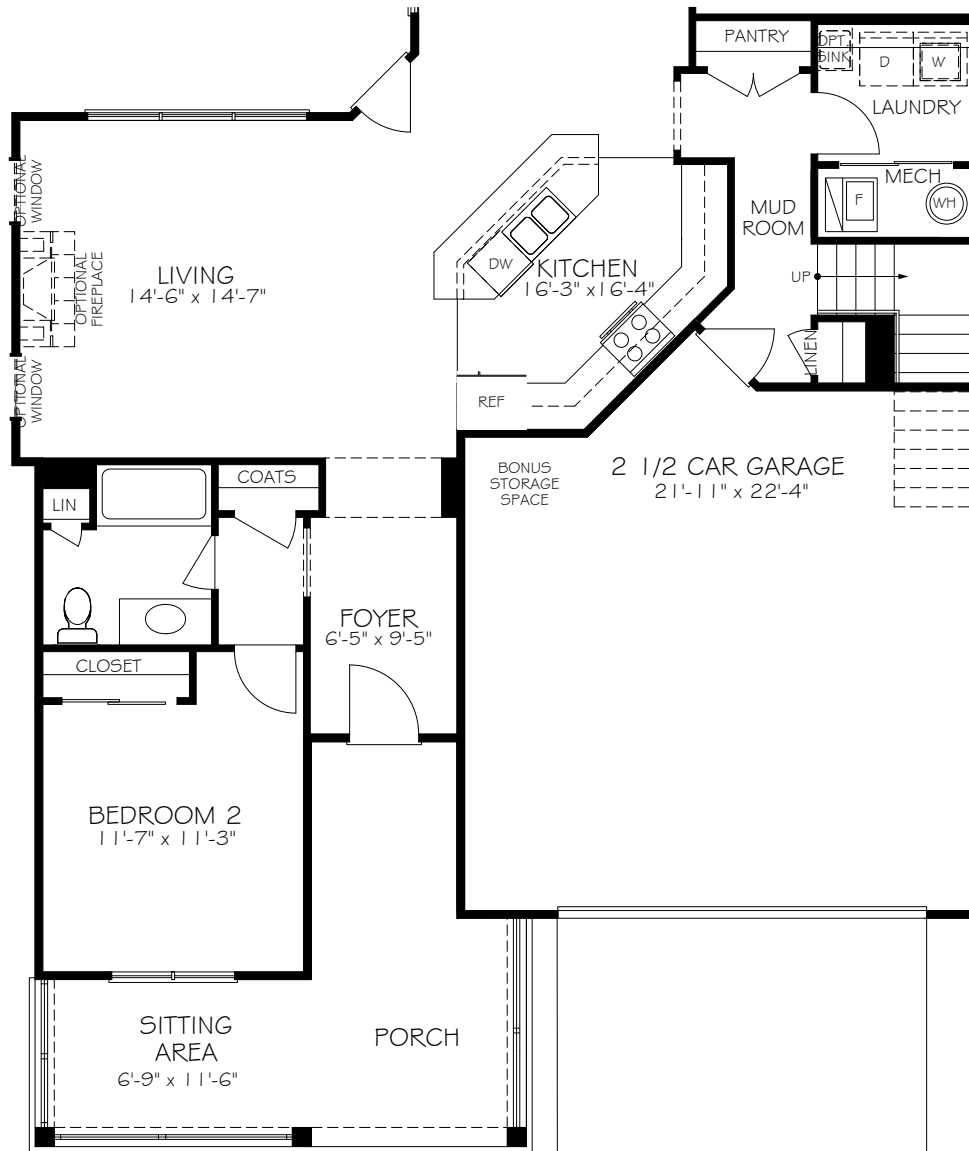


INDIANAPOLIS - PORTICO  
AMERICAN PORCH  
REV. 09.21

\*Optional courtyard features shown: Artificial turf, Landscaping, Trellis/Pergola, Plant walls (2), Water feature, and Stepping stone paths

© IP86, LLC 2022

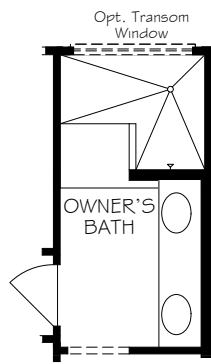


INDIANAPOLIS - PORTICO  
AMERICAN PORCH

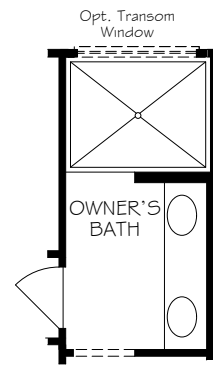
\*Note: Tray Ceilings on the First Floor with Bonus Suite option are in the following areas:  
Dining Room, Master Bedroom.

REV. 09.21

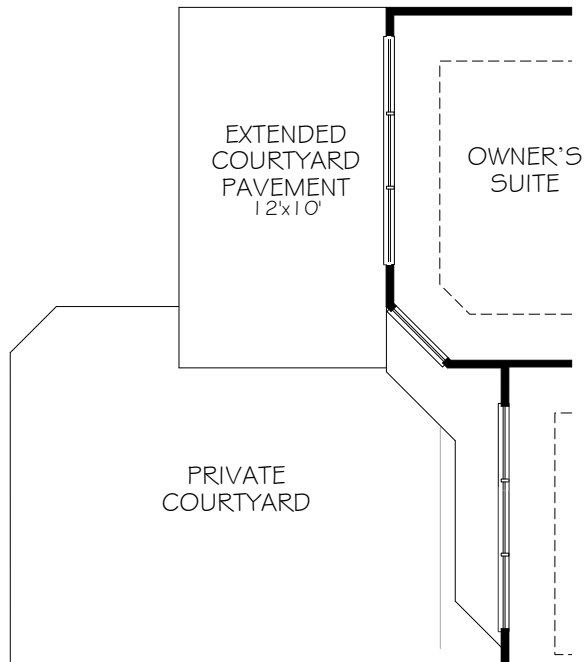
© IP86, LLC 2022



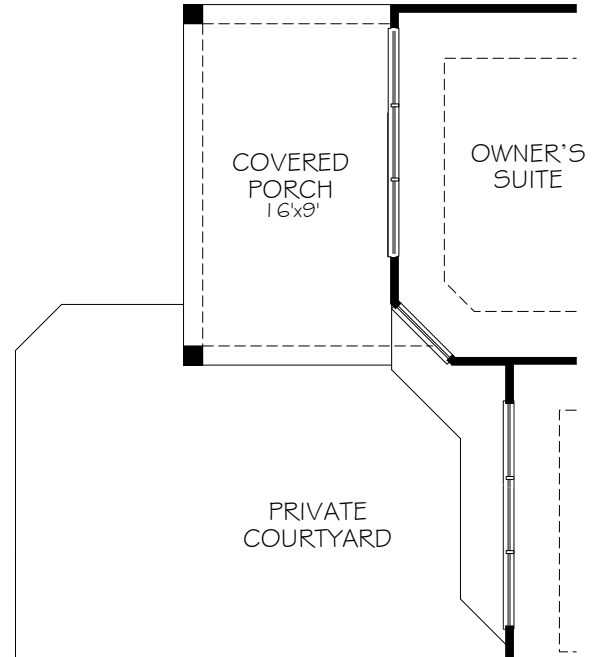
OPTIONAL L-SHAPED SHOWER LAYOUT  
WITH ZERO THRESHOLD



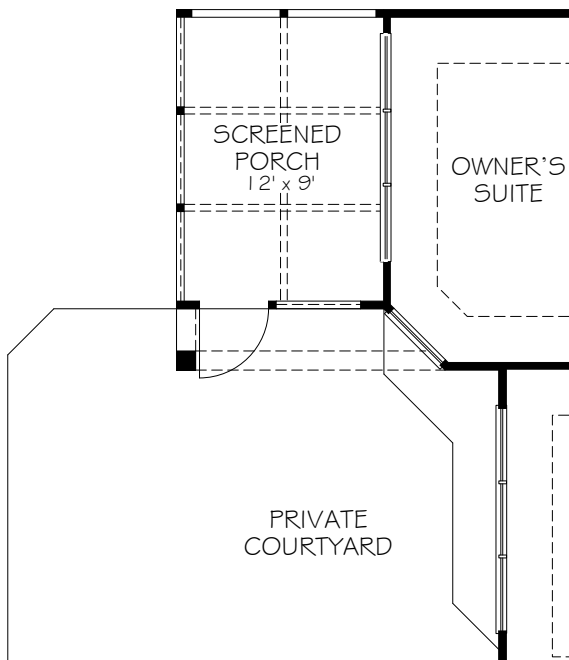
OPTIONAL UNIVERSAL  
SHOWER LAYOUT  
WITH ZERO THRESHOLD



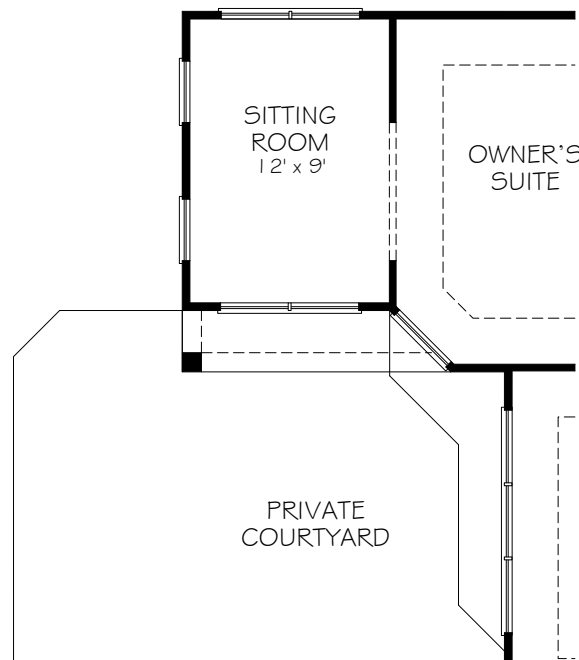
OPTIONAL EXTENDED  
COURTYARD PAVEMENT



OPTIONAL COVERED PORCH



OPTIONAL SCREENED PORCH



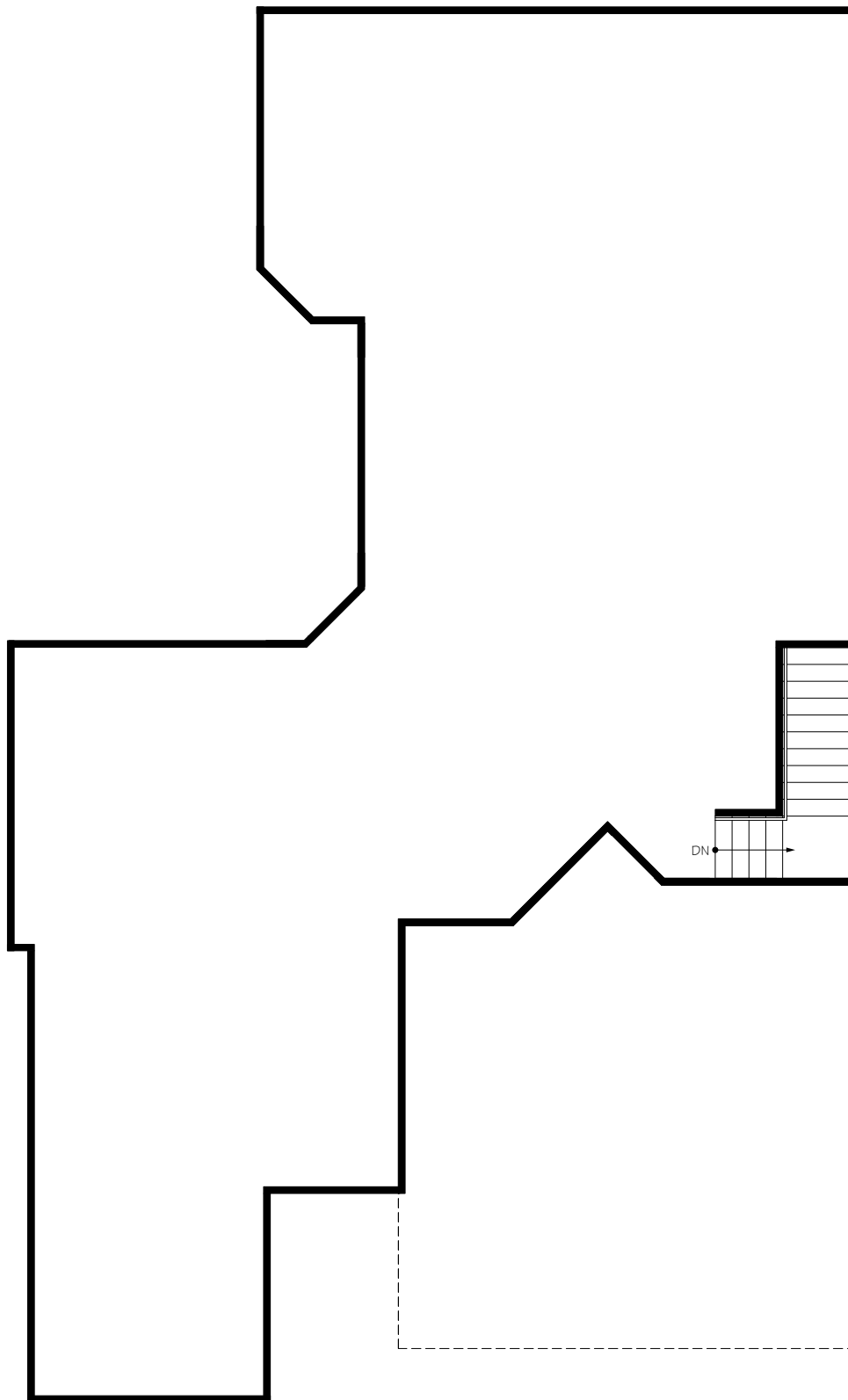
OPTIONAL SITTING ROOM

INDIANAPOLIS - PORTICO  
AMERICAN PORCH

\*Note: Zero threshold is not available with a basement home. There will be a threshold included.

REV. 09.21

© IP86, LLC 2022



CONSULT WITH YOUR LOCAL NEW HOMES  
SALES SPECIALIST TO DETERMINE IF  
BASEMENTS ARE AVAILABLE, AND THE  
CONFIGURATIONS THAT ARE OFFERED