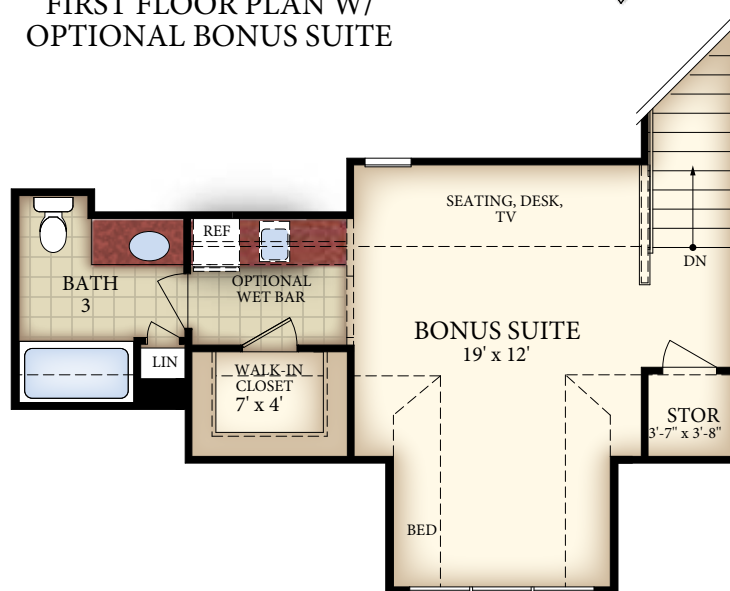




*Optional courtyard features shown: Artificial turf, Landscaping, Trellis/Pergola, Plant walls (2), Water feature, and Stepping stone paths



FIRST FLOOR PLAN W/
OPTIONAL BONUS SUITE

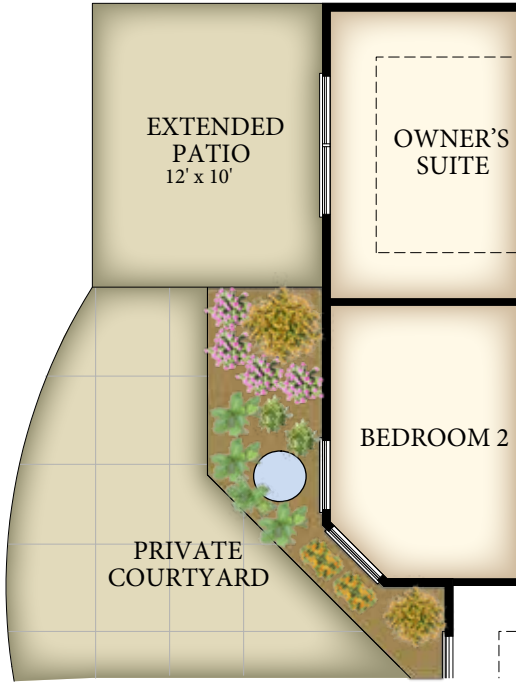


OPTIONAL SECOND FLOOR
BONUS SUITE

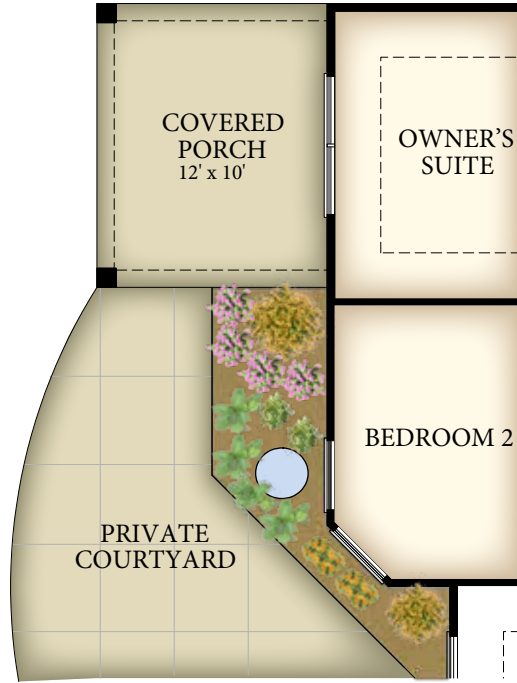
INDIANAPOLIS - PALAZZO
AMERICAN PORCH
REV. 09.21

*Note: Tray Ceilings on the First Floor with Bonus Suite option are in the following areas: Master Bedroom.

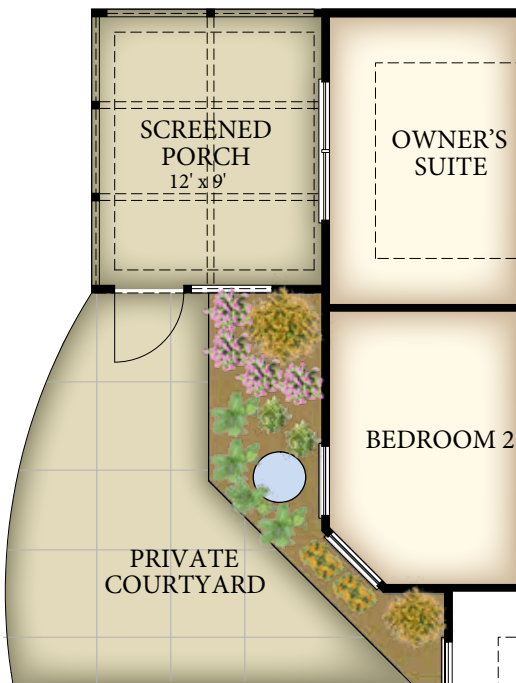
© IP86, LLC 2022



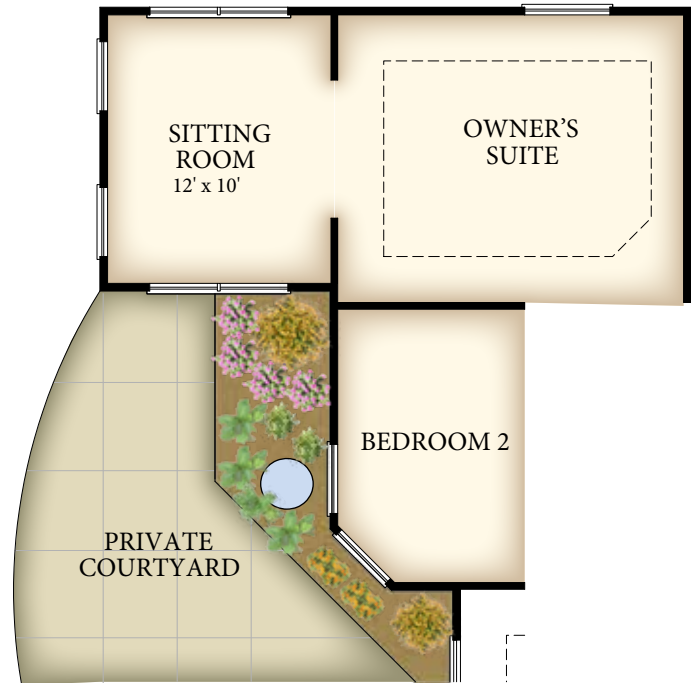
OPTIONAL EXTENDED COURTYARD
PAVEMENT



OPTIONAL COVERED PORCH

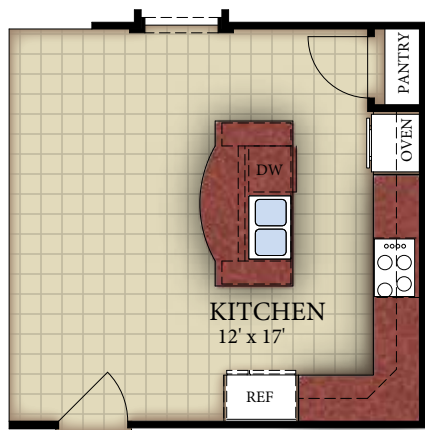


OPTIONAL SCREENED PORCH

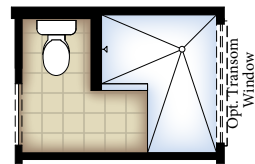


OPTIONAL OWNER'S SUITE SITTING ROOM

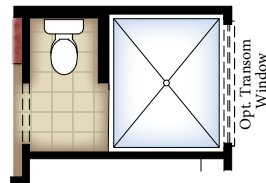
*Optional courtyard features shown: Artificial turf, Landscaping, Trellis/Pergola, Plant walls (2), Water feature, and Stepping stone paths



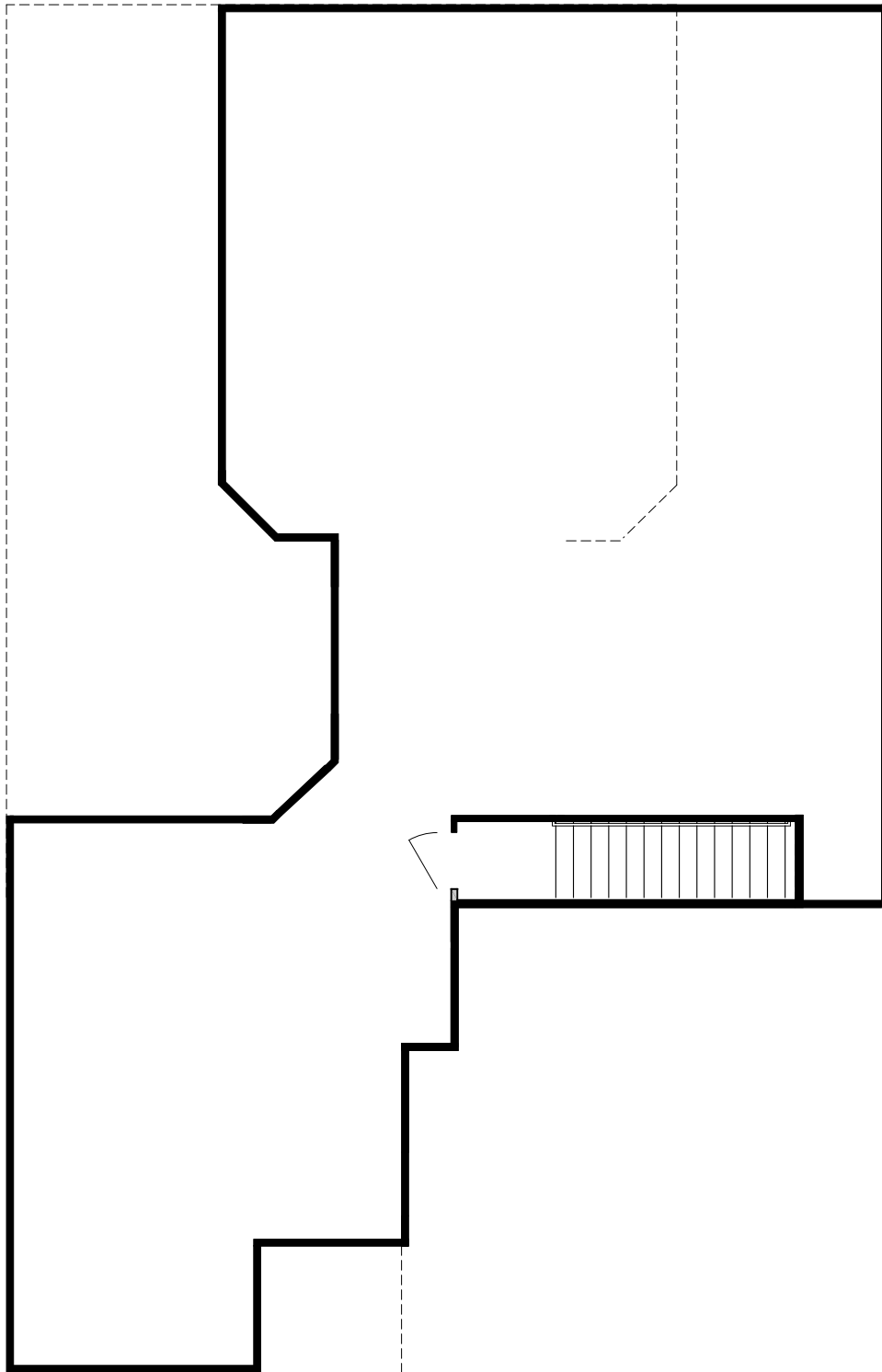
OPTIONAL DELUXE KITCHEN



OPTIONAL L-SHAPED SHOWER
LAYOUT WITH ZERO THRESHOLD



OPTIONAL UNIVERSAL SHOWER
LAYOUT WITH ZERO THRESHOLD



CONSULT WITH YOUR LOCAL NEW
HOMES SALES SPECIALIST TO
DETERMINE IF BASEMENTS ARE
AVAILABLE, AND THE CONFIGURATIONS
THAT ARE OFFERED