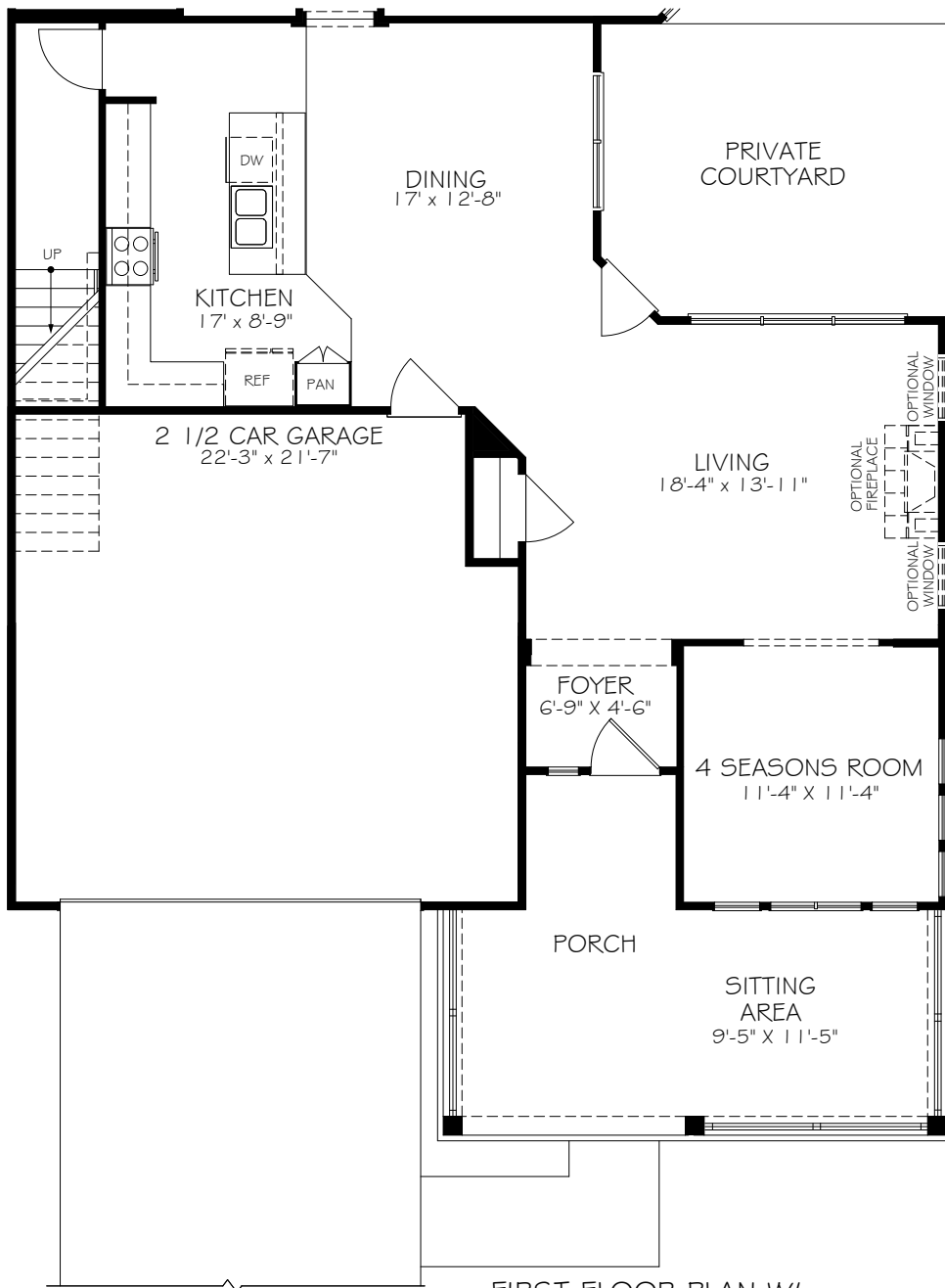
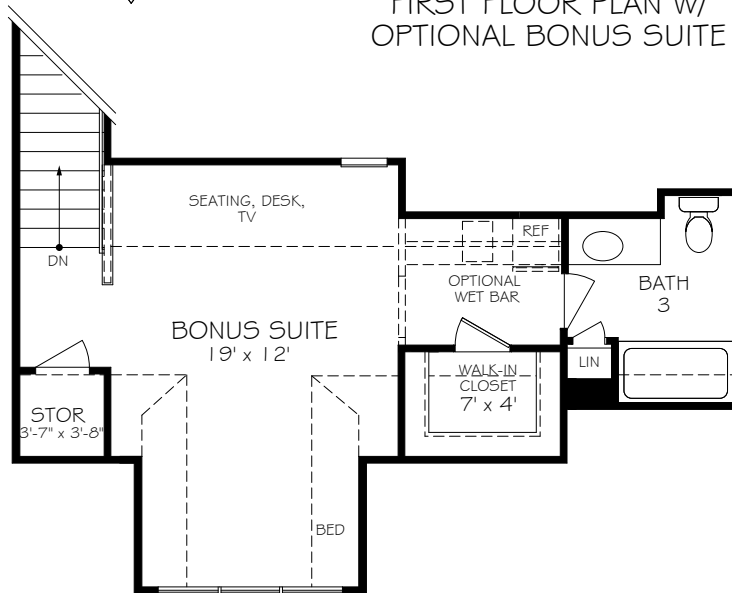


*Optional courtyard features shown: Artificial turf, Landscaping, Trellis/Pergola, Plant walls (2), Water feature, and Stepping stone paths



FIRST FLOOR PLAN W/
OPTIONAL BONUS SUITE

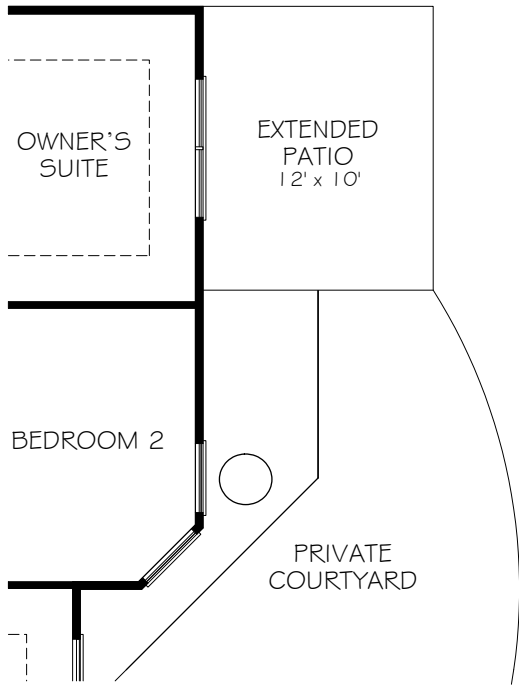


OPTIONAL SECOND FLOOR
BONUS SUITE

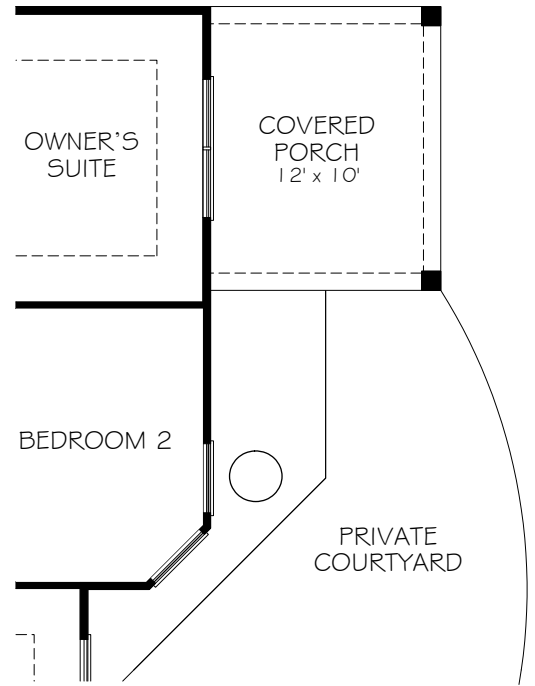
INDIANAPOLIS - PALAZZO
AMERICAN PORCH

REV. 09.21

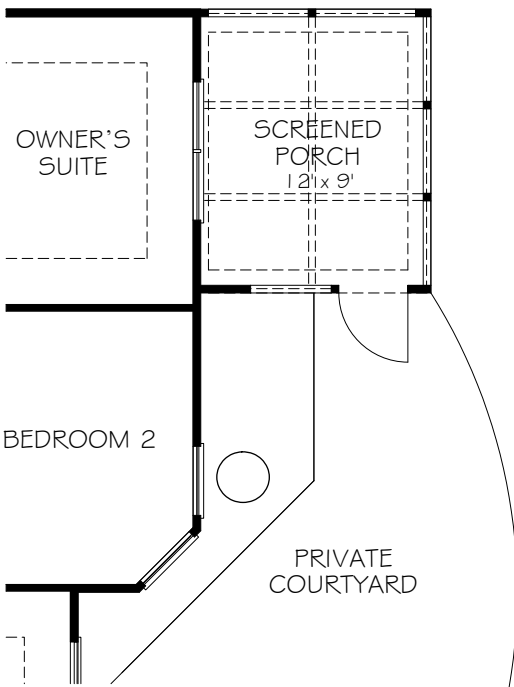
*Note: Tray Ceilings on the First Floor with Bonus Suite option are in the following areas: Master Bedroom.



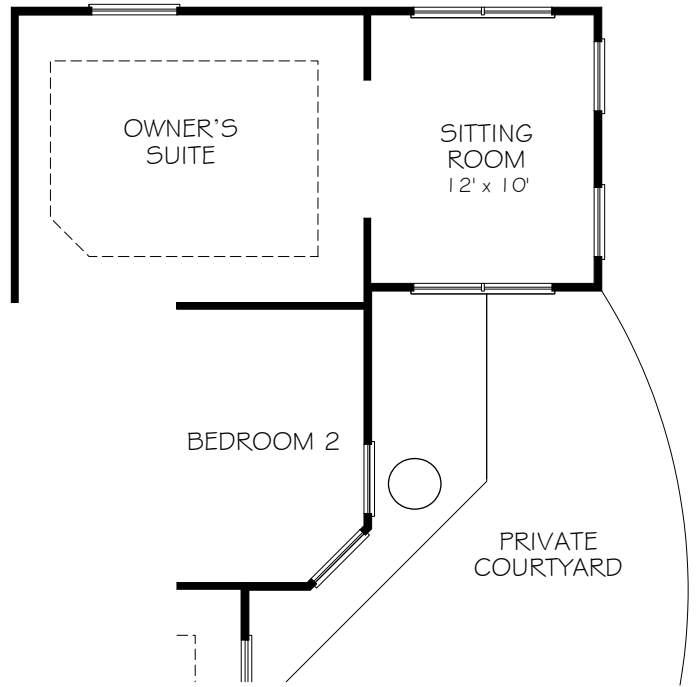
OPTIONAL EXTENDED COURTYARD PAVEMENT



OPTIONAL COVERED PORCH



OPTIONAL SCREENED PORCH

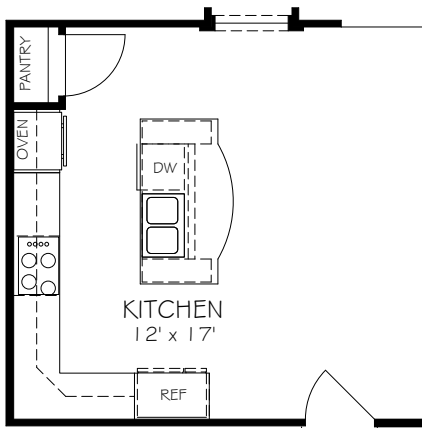


OPTIONAL OWNER'S SUITE SITTING ROOM

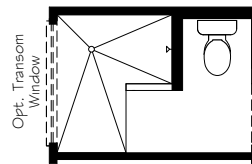
INDIANAPOLIS - PALAZZO
AMERICAN PORCH

REV. 09.21

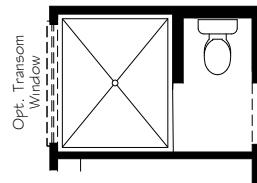
*Optional courtyard features shown: Artificial turf, Landscaping, Trellis/Pergola, Plant walls (2), Water feature, and Stepping stone paths



OPTIONAL DELUXE KITCHEN

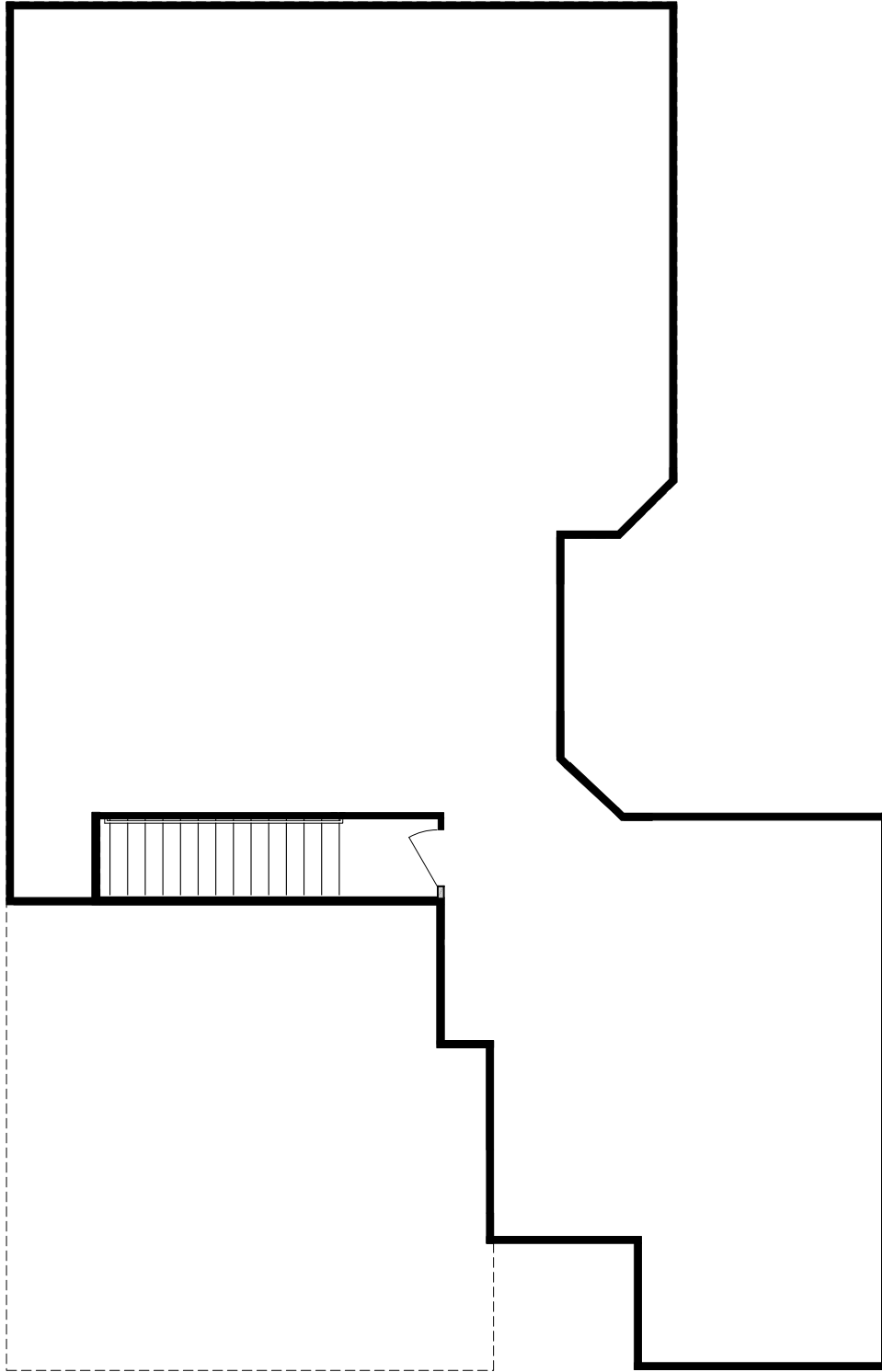


OPTIONAL L-SHAPED SHOWER LAYOUT WITH ZERO THRESHOLD



OPTIONAL UNIVERSAL SHOWER LAYOUT WITH ZERO THRESHOLD

*Note: Zero threshold is not available with a basement home. There will be a threshold included.



CONSULT WITH YOUR LOCAL NEW
HOMES SALES SPECIALIST TO
DETERMINE IF BASEMENTS ARE
AVAILABLE, AND THE CONFIGURATIONS
THAT ARE OFFERED