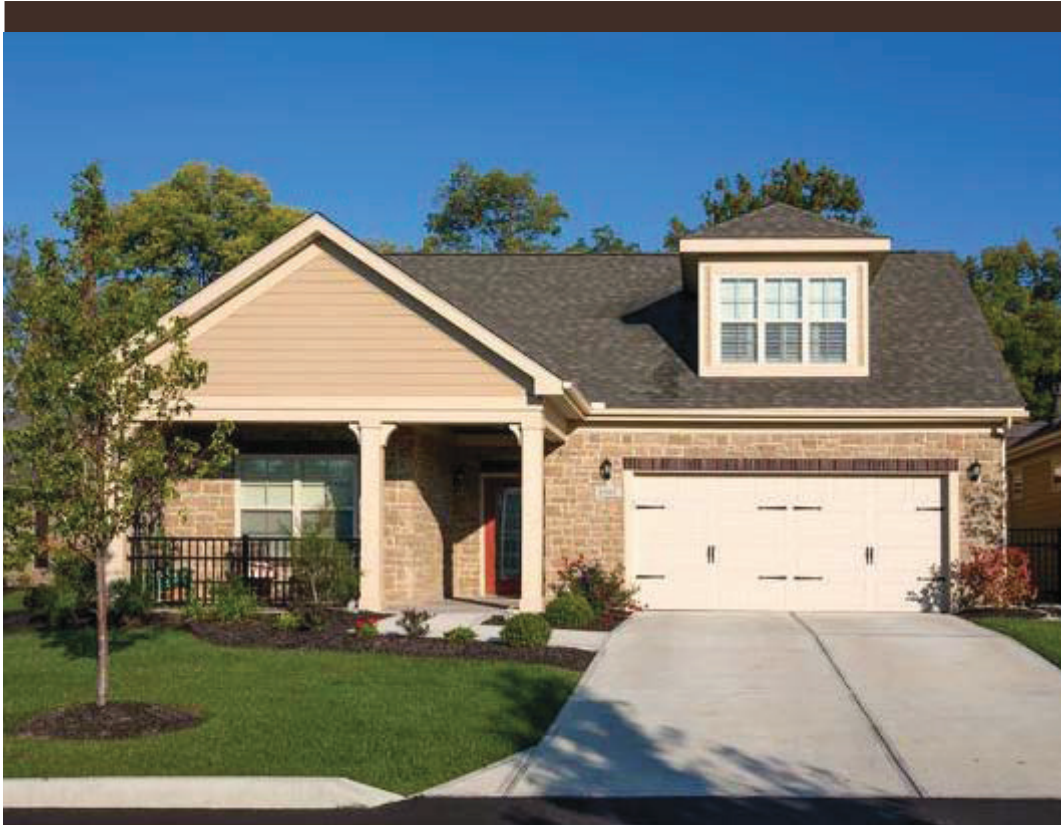




Portico +

2 BEDROOM - DEN - 2 BATHROOM - 2.5 GARAGE



Some features and specifications may vary depending on the architectural style and community.

Exterior Features

The Portico is a beautifully designed, free-standing home on a boutique-style home site. Each home includes access to your very own private courtyard.

- Traditional high pitch roof
- Cultured stone front and stone water table
- Low-e glass windows
- Covered entryway
- Spacious enclosed private courtyard
- 2.5 car garage
- Architecturally designed landscape package
- Decorative fencing at courtyard (lot dependent)
- Select your curb appeal with a hip or gable roof
- Optional front porch
- Architectural shingles (dimensional)
- Leaded glass entry door (optional)
- Carriage style insulated garage door
- HardiePlank fiber cement siding
- Sitting room, covered porch or screened porch (optional)

Base Price



Portico + 2 BEDROOM - DEN - 2 BATHROOM - 2.5 GARAGE



The Villas at
PARK PLACE



Floor plans are for illustration purposes only. Some features and specifications may vary depending on the architectural style.
© Epcon Communities Franchising, Inc. 2012

Interior Features

Enjoy all the convenience of single-story living, plus thoughtfully planned privacy features accenting each home. We've considered your view from every angle. So no matter which way you look out, the view from your home will be beautiful.

- 9 foot ceilings throughout
- 10 foot tray in owner's suite, living room and dining room
- Tray ceiling varies when Bonus suite is added
- Courtyard views from the owner's suite, dining room, kitchen and living room
- Interior spaces flooded with natural light
- Fully equipped energy efficient, stainless steel appliances
- Kitchen island and pantry
- Granite countertops in Kitchen
- Gourmet kitchen cabinetry
- Fireplace in living room with granite hearth and surround
- Hardwood floors in kitchen, dining room, living room and foyer
- Large owner's suite with walk-in closet and private bath
- Brushed stainless steel or oil rubbed bronze plumbing fixtures
- Adult height vanities in baths
- Walk-in (no curb) owner's suite shower (optional)
- Expansive laundry room
- Spacious den
- Sitting room, covered porch or screened porch (optional)
- Sq. Ft. range 1,916 – 2,762



Portico + BONUS SUITE



FIRST FLOOR PLAN
W/ OPTIONAL BONUS SUITE



OPTIONAL SECOND FLOOR
BONUS SUITE

Floor plans are for illustration purposes only. Some features and specifications may vary depending on the architectural style.
© Epcon Communities Franchising, Inc. 2012

Bonus Suite Features

- Spacious Bedroom
- Private bathroom
- Open living room
- Two additional storage closets
- Kitchenette available
- Wet bar available
- Approximately 730 sq. ft.

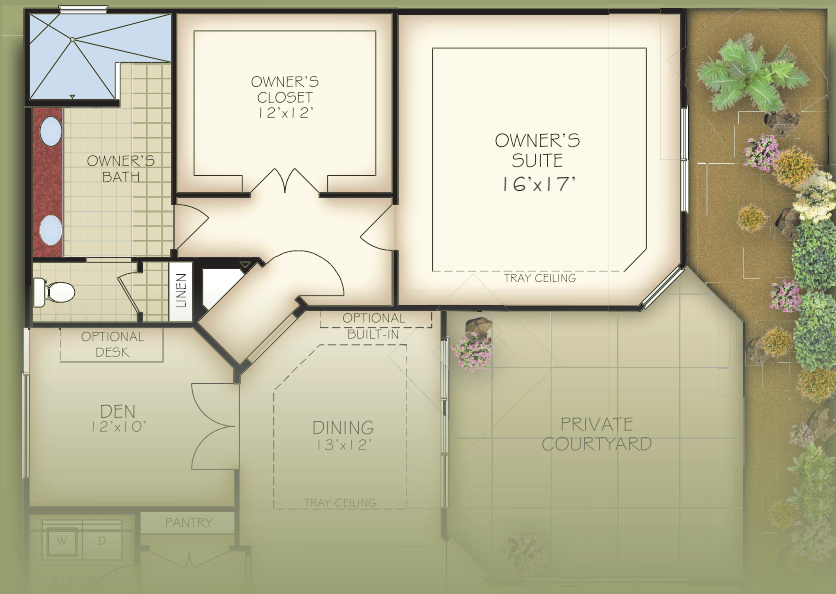
Bonus Suite Uses

- Home Office
- Game room
- Craft room
- Additional guest quarters

Bonus Suite Price



Portico + DELUXE OWNER'S SUITE



Floor plans are for illustration purposes only. Some features and specifications may vary depending on the architectural style.
© Epcon Communities Franchising, Inc. 2012

Deluxe Owner's Suite

- 215 additional Sq. Ft. of living space
- Enlarged walk-in closet
- Enlarged owner's bedroom
- Enlarged owner's bath

Deluxe Suite Price

